

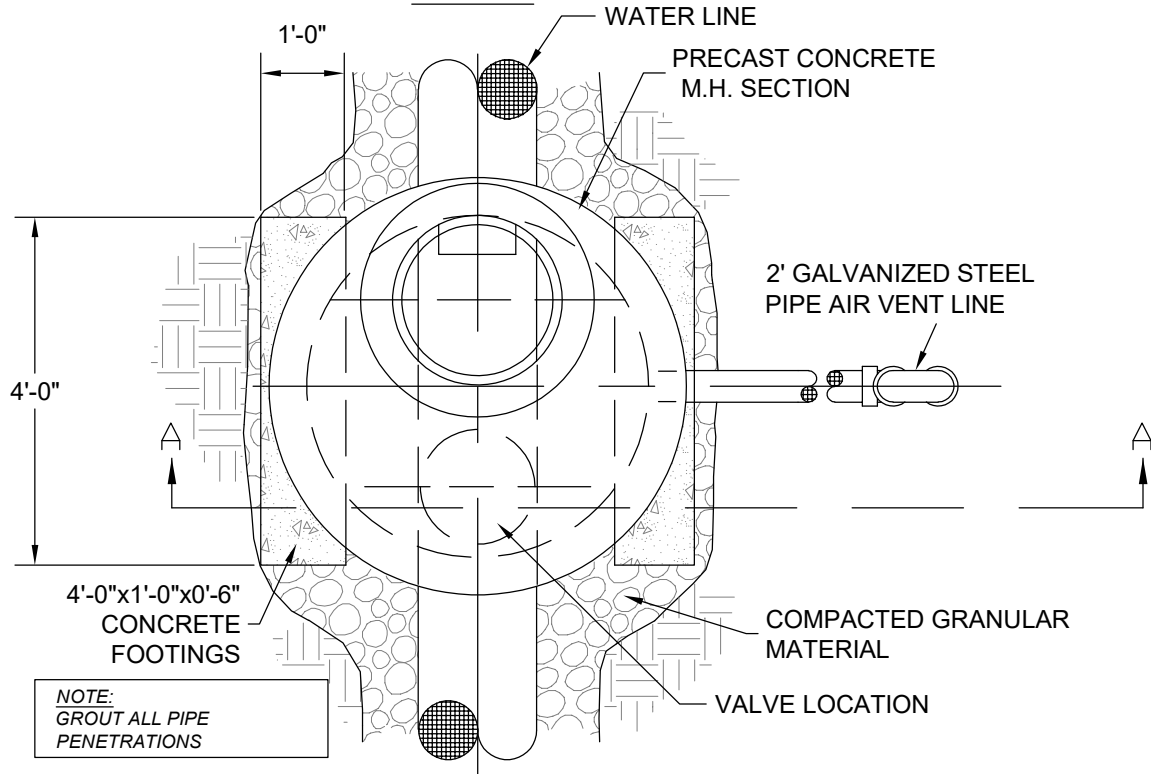


STANDARD CONSTRUCTION DETAILS

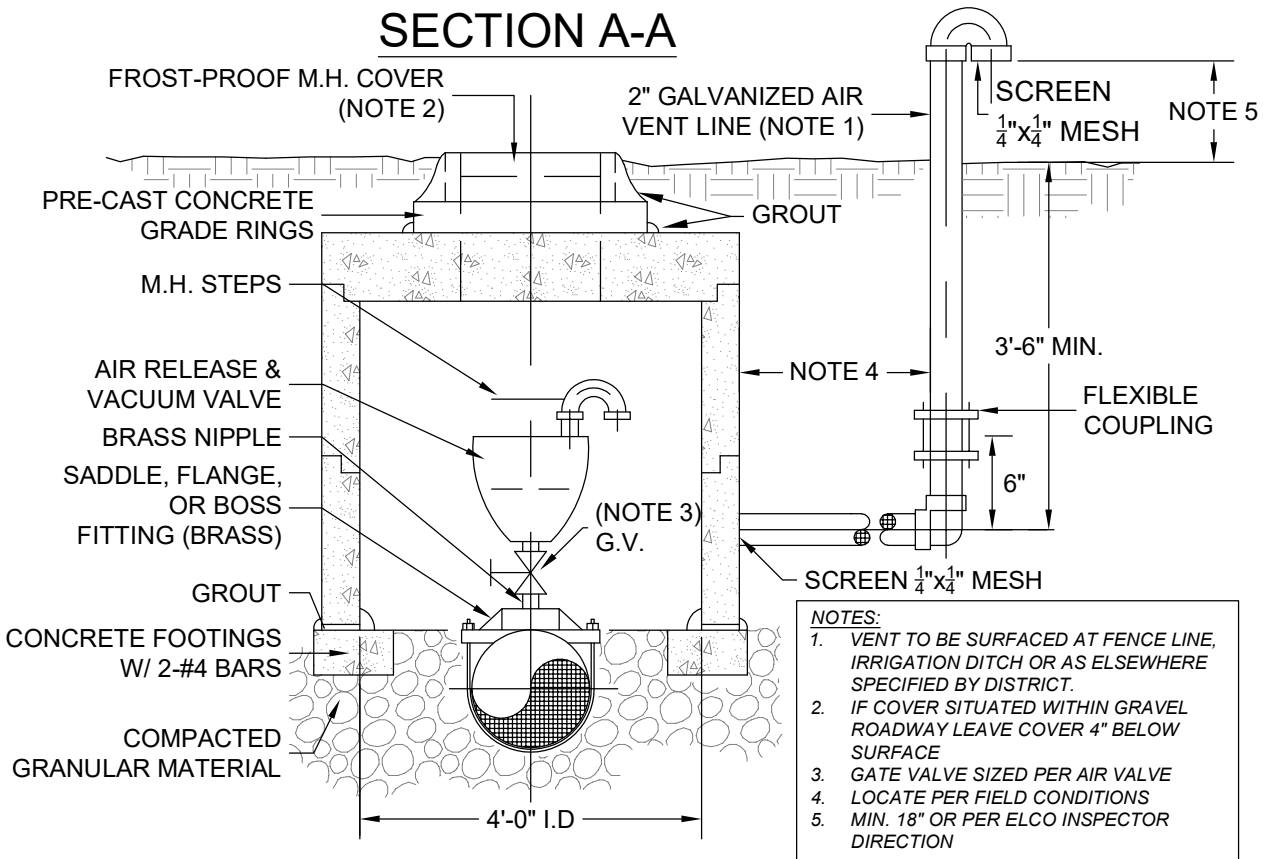
TABLE OF CONTENTS

<u>DRAWING TITLE</u>	<u>DWG NO.</u>
❖ Air Relief / Vacuum Valve with Vault	001
❖ Blowoff Assembly – Type (A)	002
❖ Blowoff Assembly – Type (B)	003
❖ Buried Casing Detail	004
❖ Trench Detail	005
❖ Trench & Bedding Detail	006
❖ Cut-Off Wall	007
❖ Insulated Water Main at Storm Sewer or Culvert Crossing	008
❖ Typical ¾" & 1" Curbstop Detail	009
❖ Typical ¾" & 1" Meter Pit Detail	010
❖ Typical ¾" Dual Meter Pit Detail	011
❖ Large Water Service Detail 1.5 - 2"	012
❖ Water Meter Layout Details	013
❖ 3", 4" & 6 Meter Vault Side View	014
❖ 3", 4" & 6 Meter Vault Top View	015
❖ Valve Detail	016
❖ Typical Fire Hydrant Installation	017
❖ Fire Hydrant Installation High Density Development Areas	018
❖ Water Main Lowering Detail	019
❖ Typical Thrust Blocks	020
❖ Tracer Wire Box Detail	021

PLAN

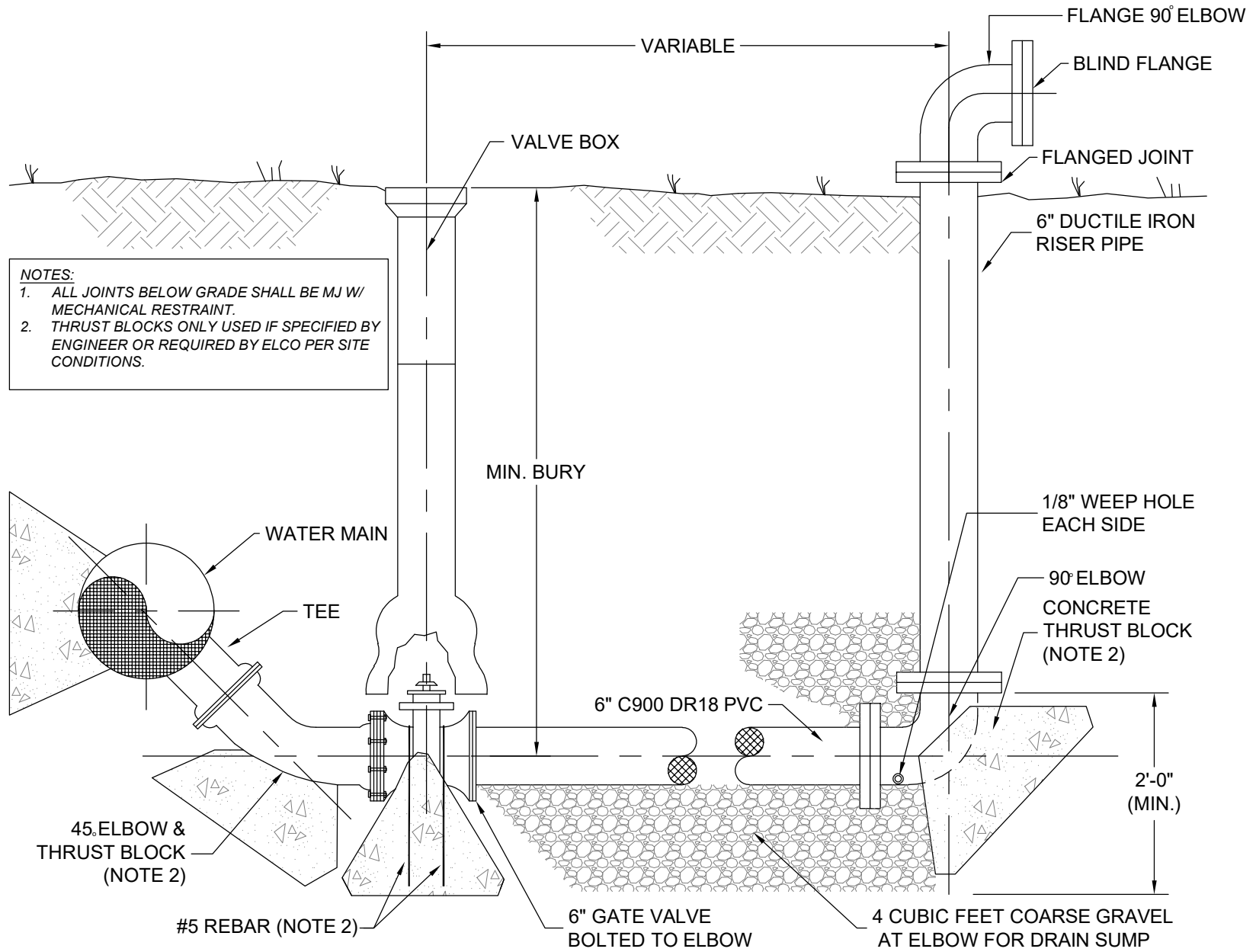


SECTION A-A



EAST LARIMER COUNTY WATER DISTRICT AIR RELIEF / VACUUM VALVE WITH VAULT

Designed	N/A	Date	N/A	File No.	esd001_airvac
Drawn	RKB	08/91		Drawing No.	001
Revised	EJV	11/21			NOT TO SCALE
Approved	RS	8/21			Sheet 01 of 01



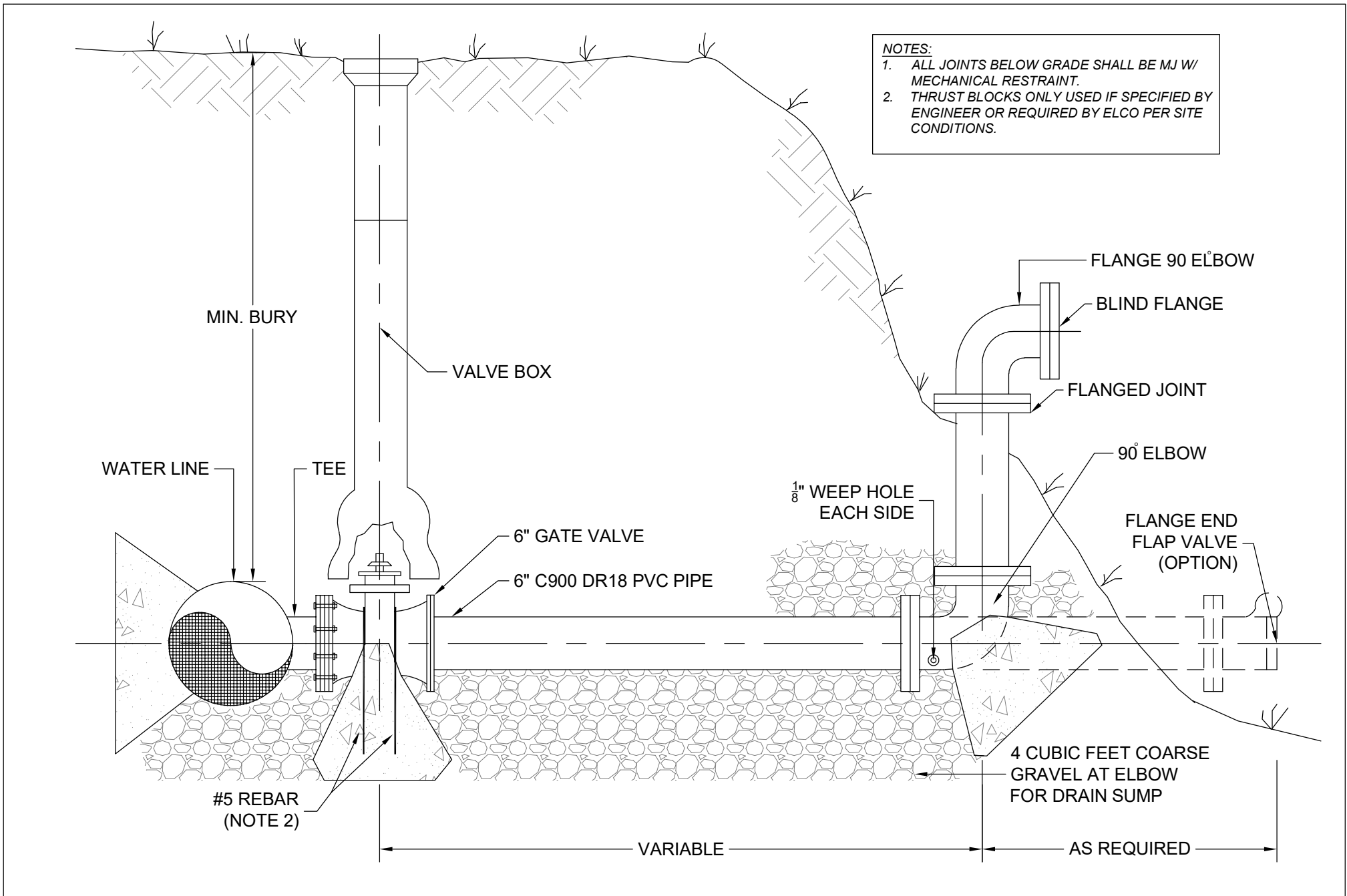
NOTES:
 1. ALL JOINTS BELOW GRADE SHALL BE MJ W/ MECHANICAL RESTRAINT.
 2. THRUST BLOCKS ONLY USED IF SPECIFIED BY ENGINEER OR REQUIRED BY ELCO PER SITE CONDITIONS.



EAST LARIMER COUNTY WATER DISTRICT

BLOWOFF ASSEMBLY - TYPE (A)

Designed	<i>N/A</i>	Date	<i>N/A</i>	File No.	<i>esd002_blowoff_a</i>
Drawn	<i>RKB</i>	Date	<i>08/01/91</i>	Drawing No.	<i>002</i>
Revised	<i>EJV</i>	Date	<i>8/21</i>	NOT TO SCALE	
Approved	<i>RS</i>	Date	<i>8/21</i>	Sheet <i>01</i> of <i>02</i>	



NOTES:

1. ALL JOINTS BELOW GRADE SHALL BE MJ W/ MECHANICAL RESTRAINT.
2. THRUST BLOCKS ONLY USED IF SPECIFIED BY ENGINEER OR REQUIRED BY ELCO PER SITE CONDITIONS.

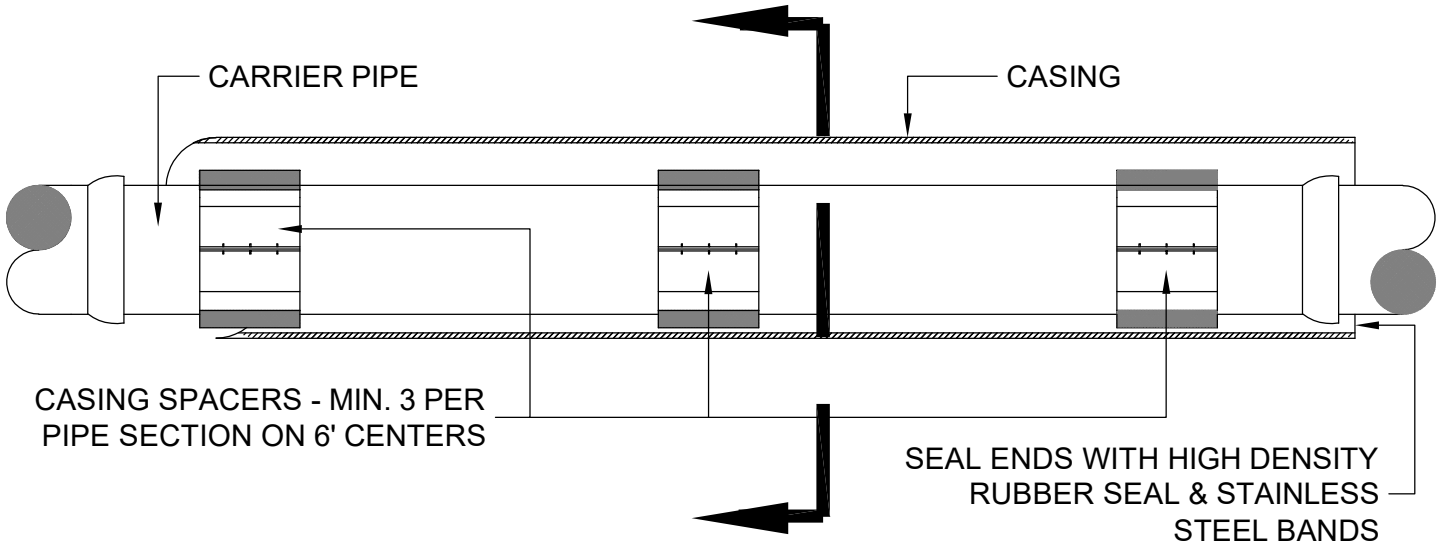


EAST LARIMER COUNTY WATER DISTRICT

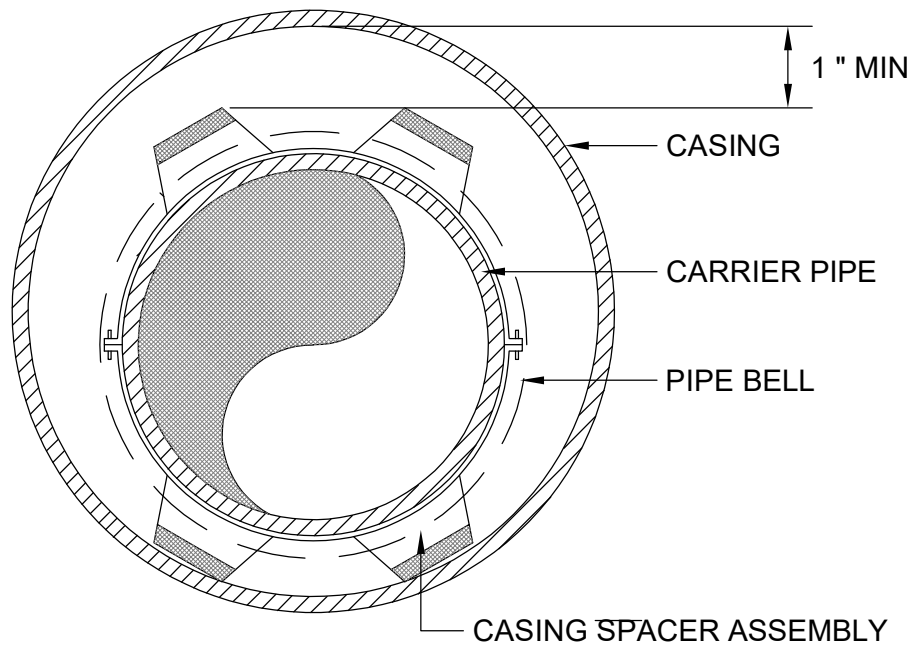
BLOWOFF ASSEMBLY - TYPE (B)

Designed	N/A	Date	N/A	File No.	esd003_blowoff_b
Drawn	RKB		08/01/91	Drawing No.	003
Revised	EJV		8/21		NOT TO SCALE
Approved	RS		8/21		Sheet 02 of 02

CENTERLINE SECTION



END SECTION

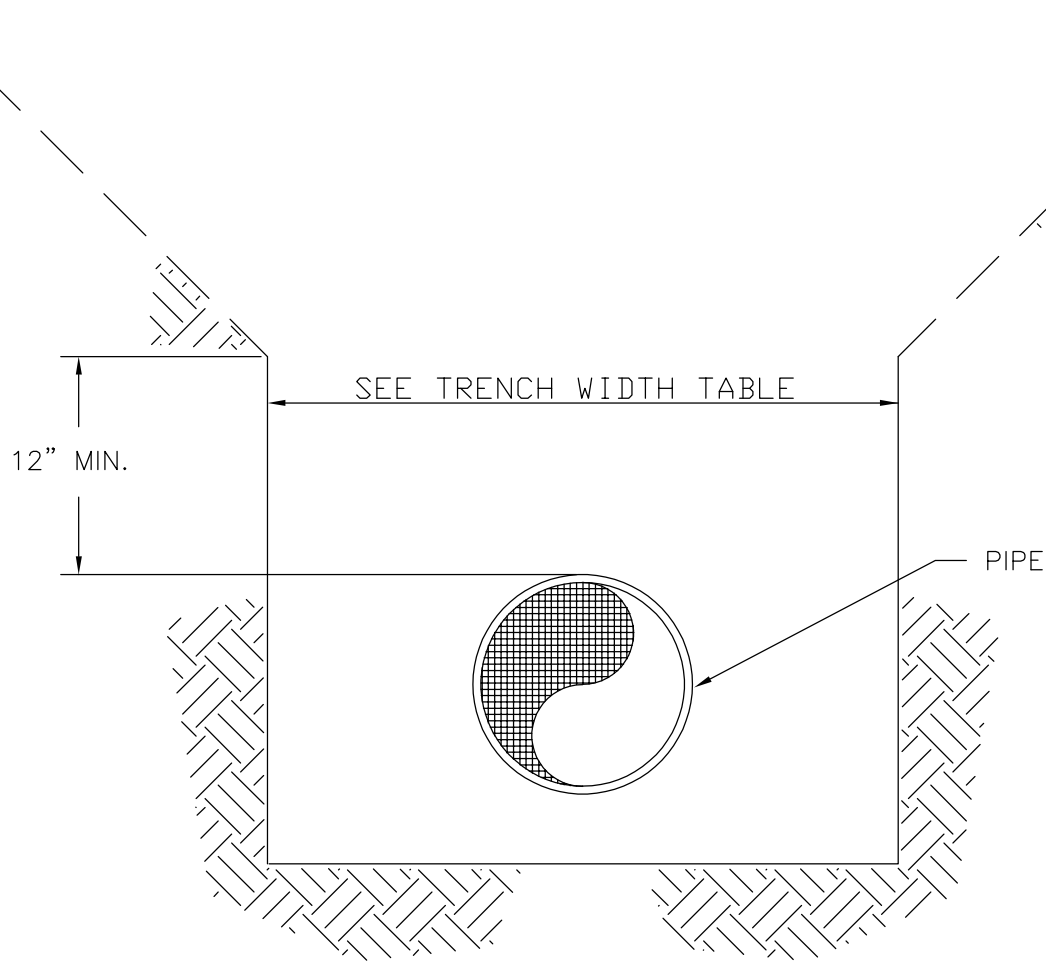


NOTE:
SEE SPECIFICATIONS FOR ACCEPTED CASING SPACER AND END SEAL MANUFACTURERS AND MODELS.



EAST LARIMER COUNTY WATER DISTRICT
BURIED CASING DETAIL

Designed	<i>N/A</i>	Date	<i>N/A</i>	File No.	<i>esd004_buried_casing</i>
Drawn	<i>RKB</i>	Date	<i>12/93</i>	Drawing No.	<i>004</i>
Revised	<i>EJV</i>	Date	<i>8/20</i>	NOT TO SCALE	
Approved	<i>RS</i>	Date	<i>8/20</i>	Sheet <i>01</i> of <i>01</i>	



TRENCH WIDTH TABLE	
PVC OR DUCTILE IRON PIPE	
PIPE DIAMETER (INCHES)	MAXIMUM TRENCH WIDTH (INCHES)
4	28
6	30
8	32
10	34
12	36
14	38
16	40
18	42
24	46

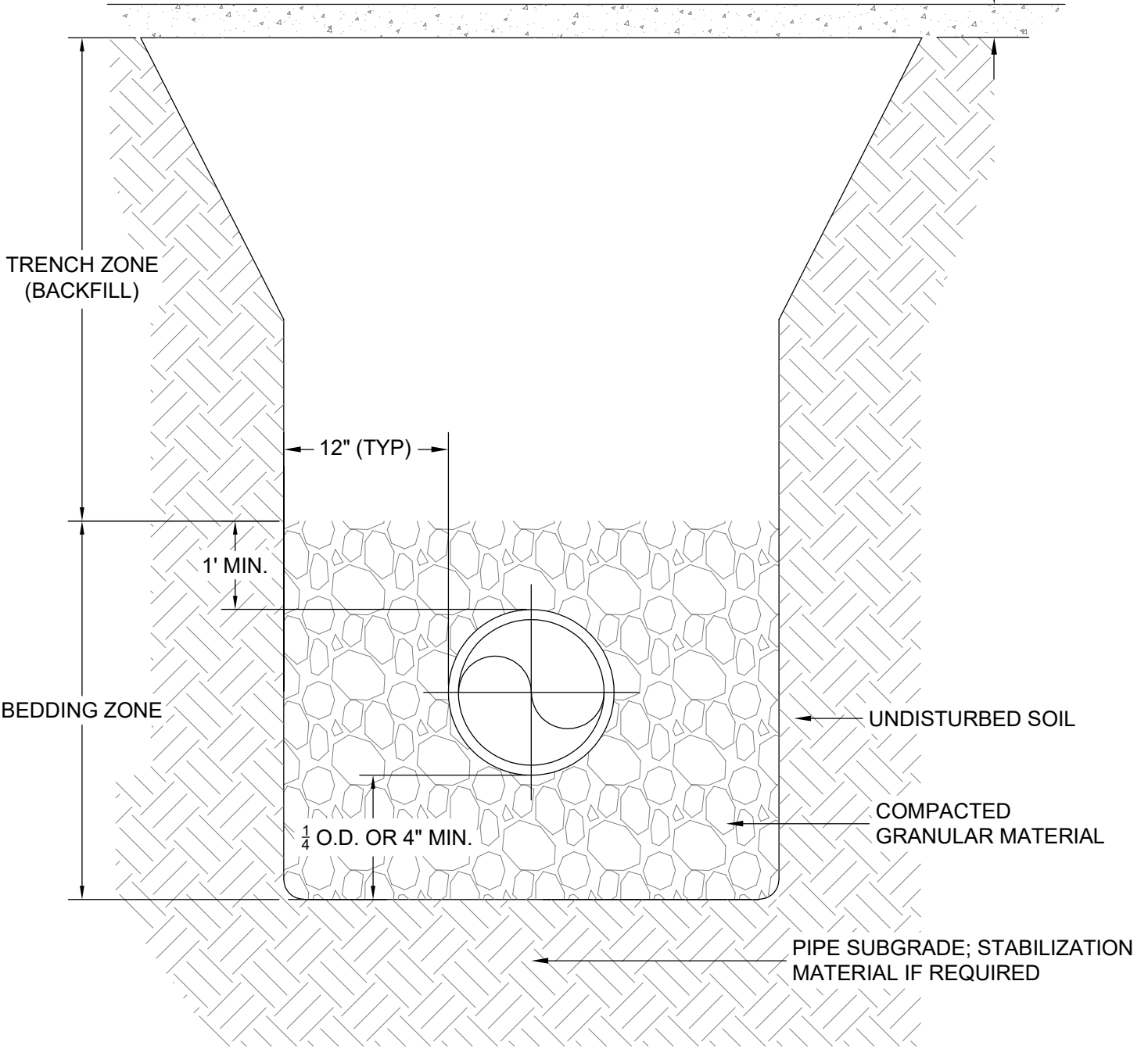


EAST LARIMER COUNTY WATER DISTRICT

TRENCH DETAIL

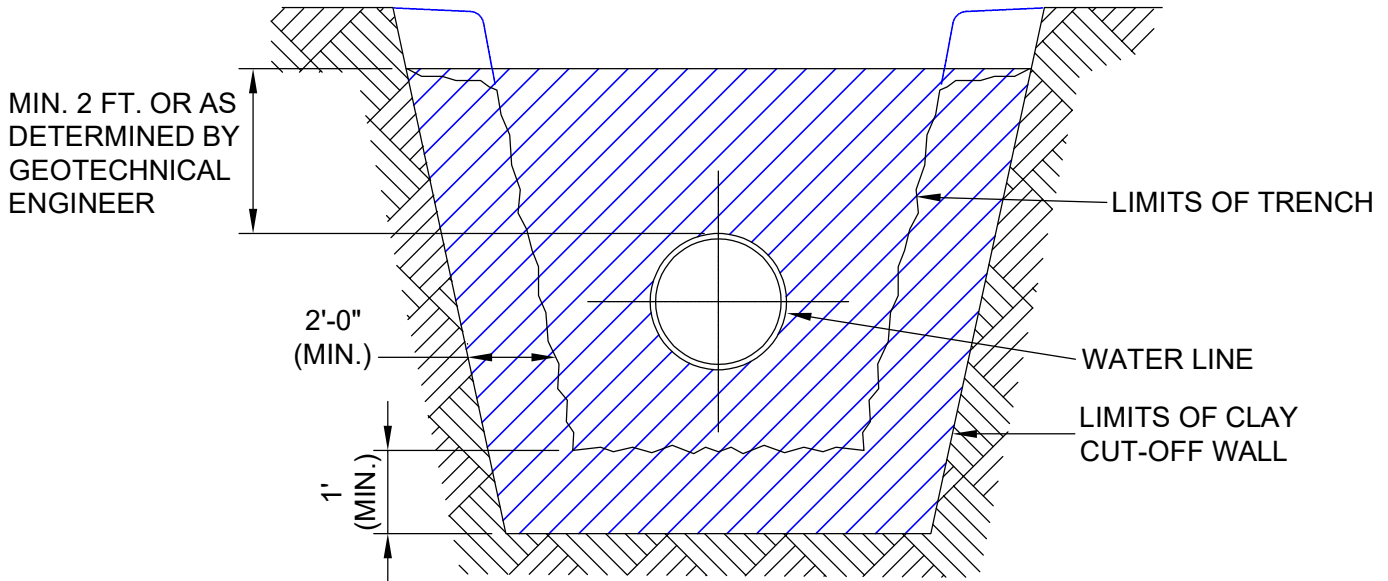
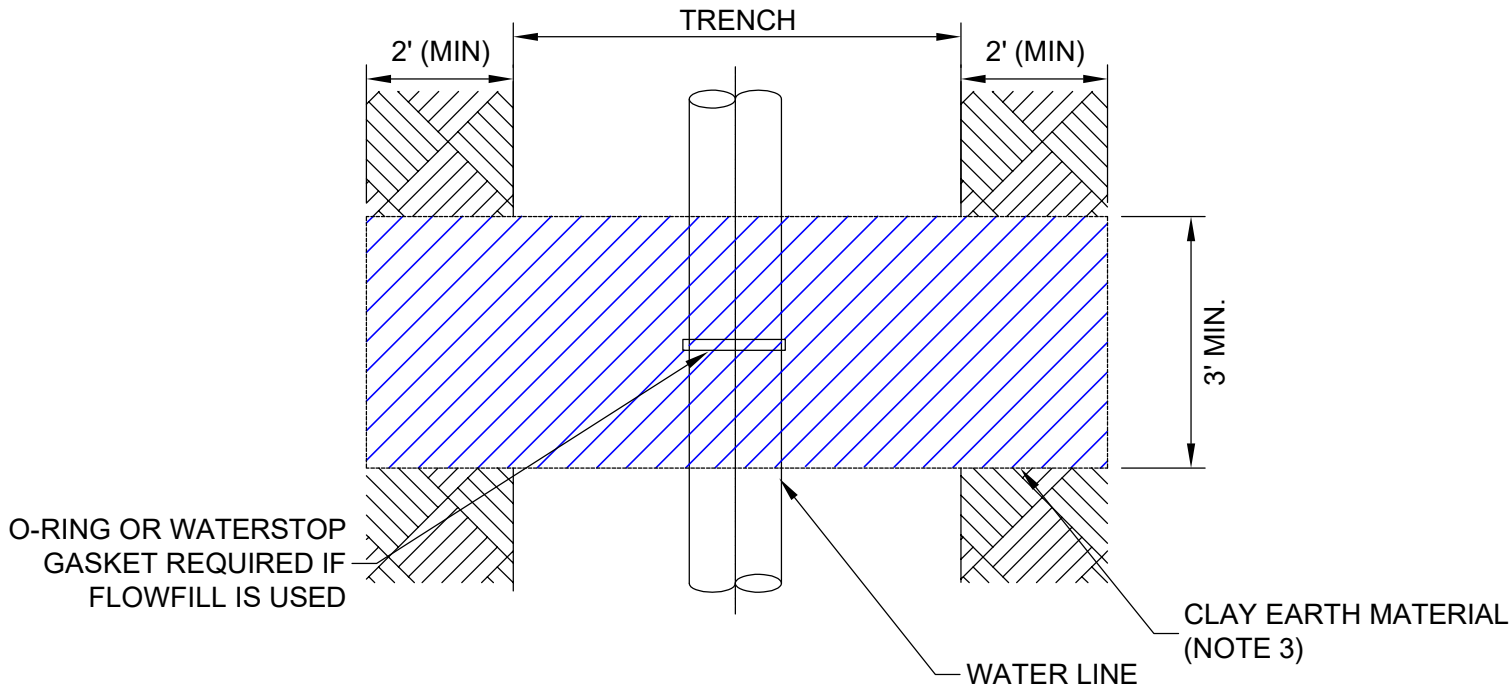
Designed	<i>N/A</i>	Date <i>N/A</i>	File No. <i>esd023_trench_detail</i>
Drawn	<i>RKB</i>	<i>10/91</i>	Drawing No. <i>005</i>
Revised	<i>EJV</i>	<i>8/20</i>	NOT TO SCALE
Approved	<i>RS</i>	<i>8/20</i>	Sheet <i>01</i> of <i>01</i>

PAVEMENT IF REQUIRED



EAST LARIMER COUNTY WATER DISTRICT
TRENCH AND BEDDING DETAIL

Designed	<i>N/A</i>	Date	<i>N/A</i>	File No.	<i>esd006_bedding_class</i>
Drawn	<i>EJV</i>		<i>08/20</i>	Drawing No.	<i>006</i>
Revised	<i>EJV</i>		<i>10/21</i>	NOT TO SCALE	
Approved	<i>RS</i>		<i>8/21</i>	Sheet <i>01</i> of <i>01</i>	

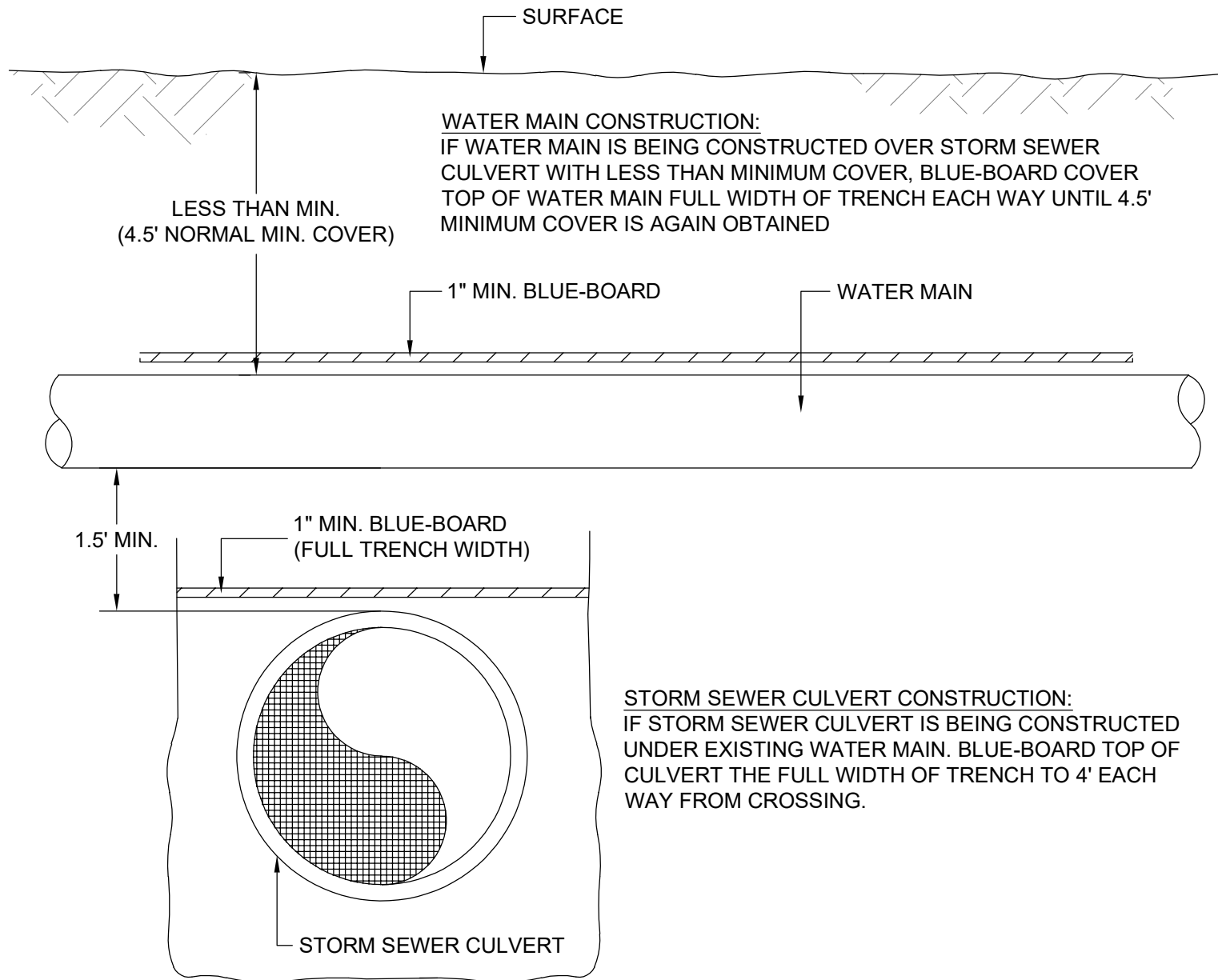


- NOTES:**
1. CLAY SHALL BE COMPACTED TO 95% MAXIMUM DENSITY.
 2. CLAY MATERIAL TO BE CLASSIFIED AS SC, CL OR ML-CL.
 3. FLOWFILL MAY BE USED INSTEAD OF CLAY MATERIAL IF APPROVED BY DISTRICT.



EAST LARIMER COUNTY WATER DISTRICT
CUT-OFF WALL

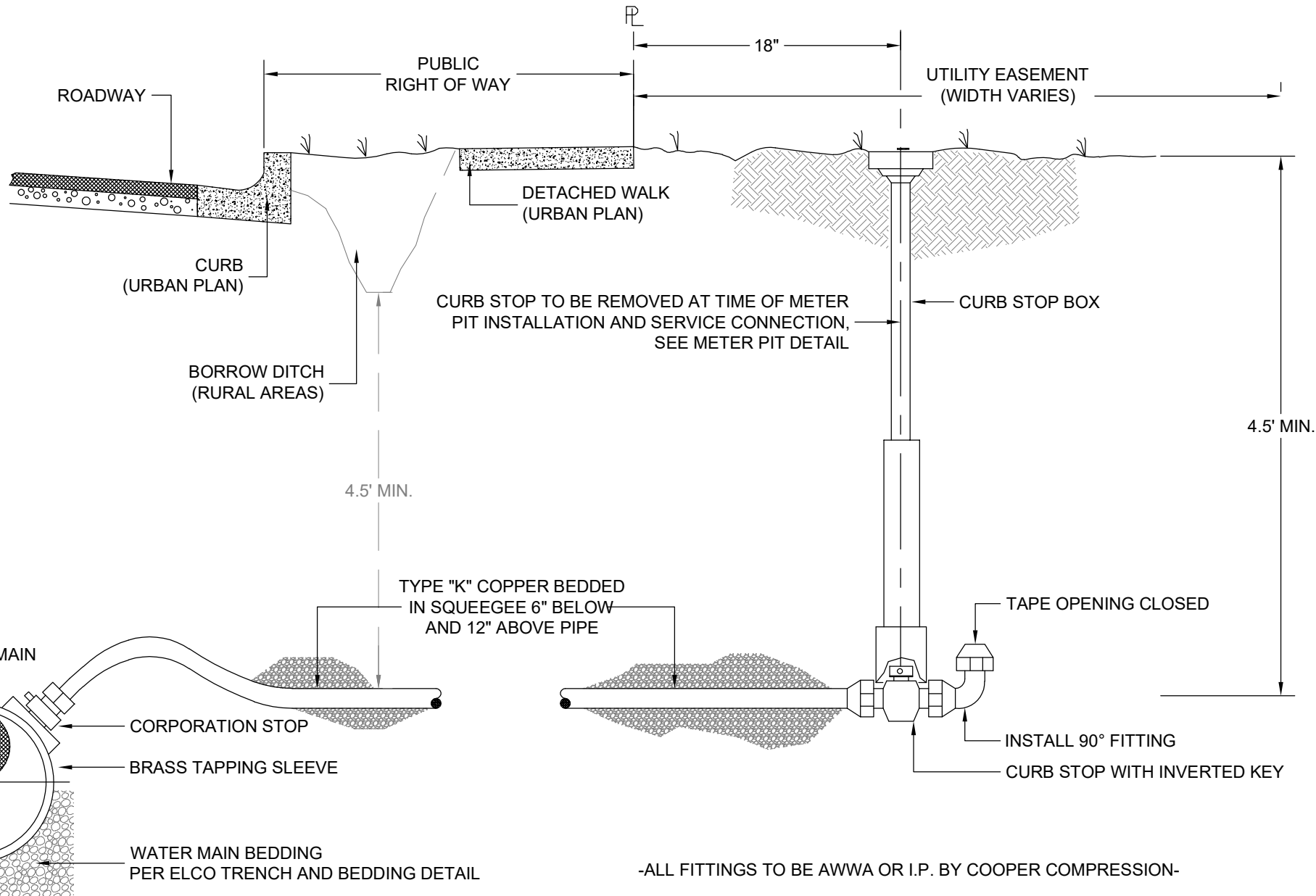
Designed	N/A	Date	N/A	File No.	esd007_cut_off_wall
Drawn	RKB	Date	10/01/91	Drawing No.	007
Revised	EJV	Date	8/21	NOT TO SCALE	
Approved	RS	Date	8/21	Sheet 01 of 01	



EAST LARIMER COUNTY WATER DISTRICT

INSULATED WATER MAIN AT STORM SEWER OR CULVERT CROSSING

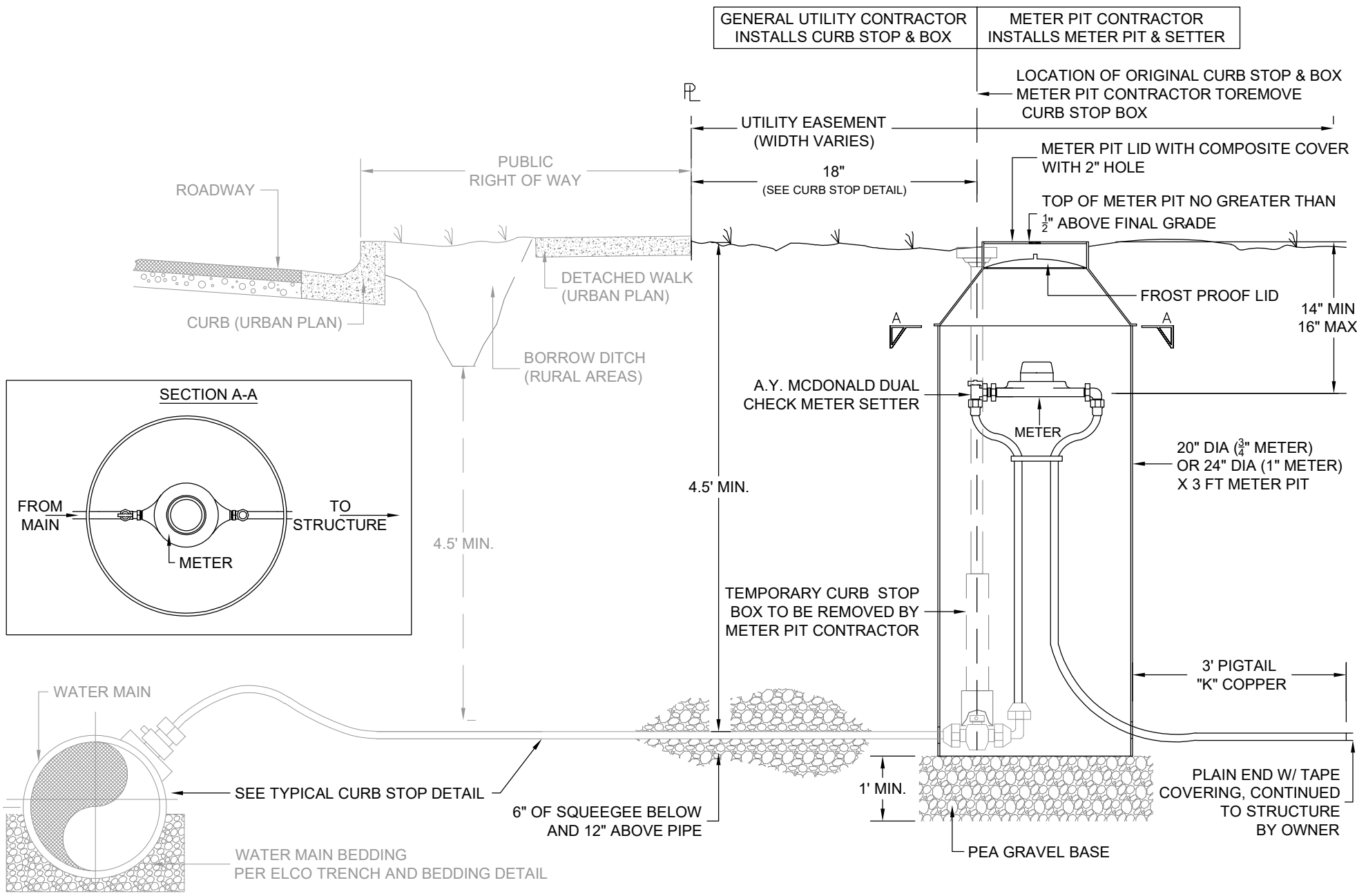
Designed	N/A	Date N/A	File No. esd008_crossing_culvert
Drawn	RKB	05/03	Drawing No. 008
Revised	EJV	8/21	NOT TO SCALE
Approved	RS	8/21	Sheet 01 of 02



EAST LARIMER COUNTY WATER DISTRICT

TYPICAL $\frac{3}{4}$ " & 1" CURB STOP DETAIL

Designed	<i>N/A</i>	Date <i>N/A</i>	File No. <i>esd009_curbstop_typical</i>
Drawn	<i>RKB</i>	<i>05/03</i>	Drawing No. <i>009</i>
Revised	<i>EJV</i>	<i>2/24</i>	NOT TO SCALE
Approved	<i>RS</i>	<i>2/24</i>	Sheet <i>01</i> of <i>02</i>

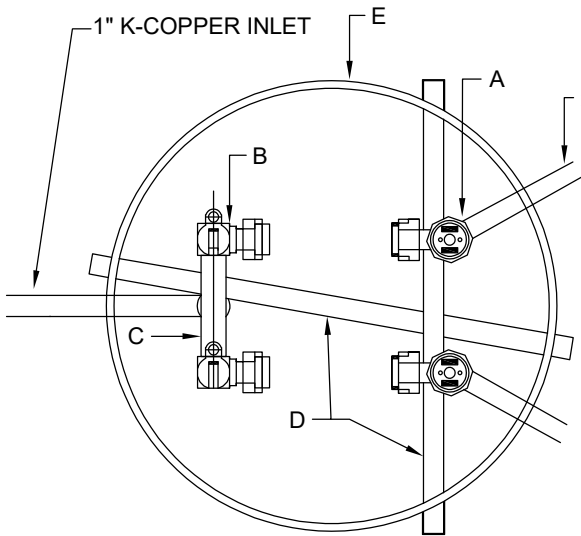
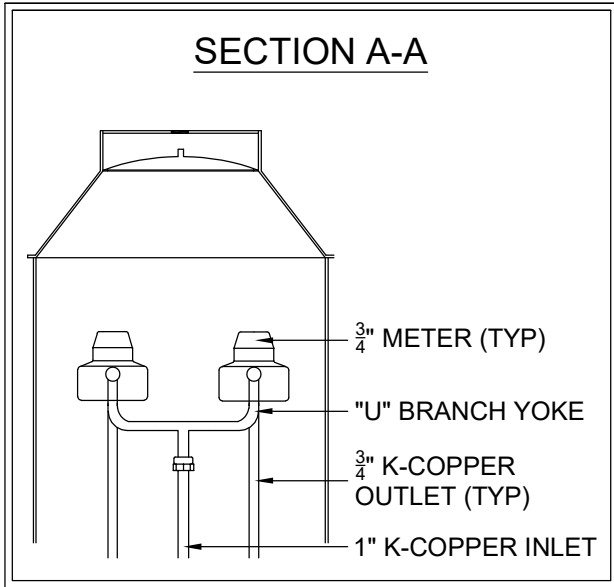


EAST LARIMER COUNTY WATER DISTRICT

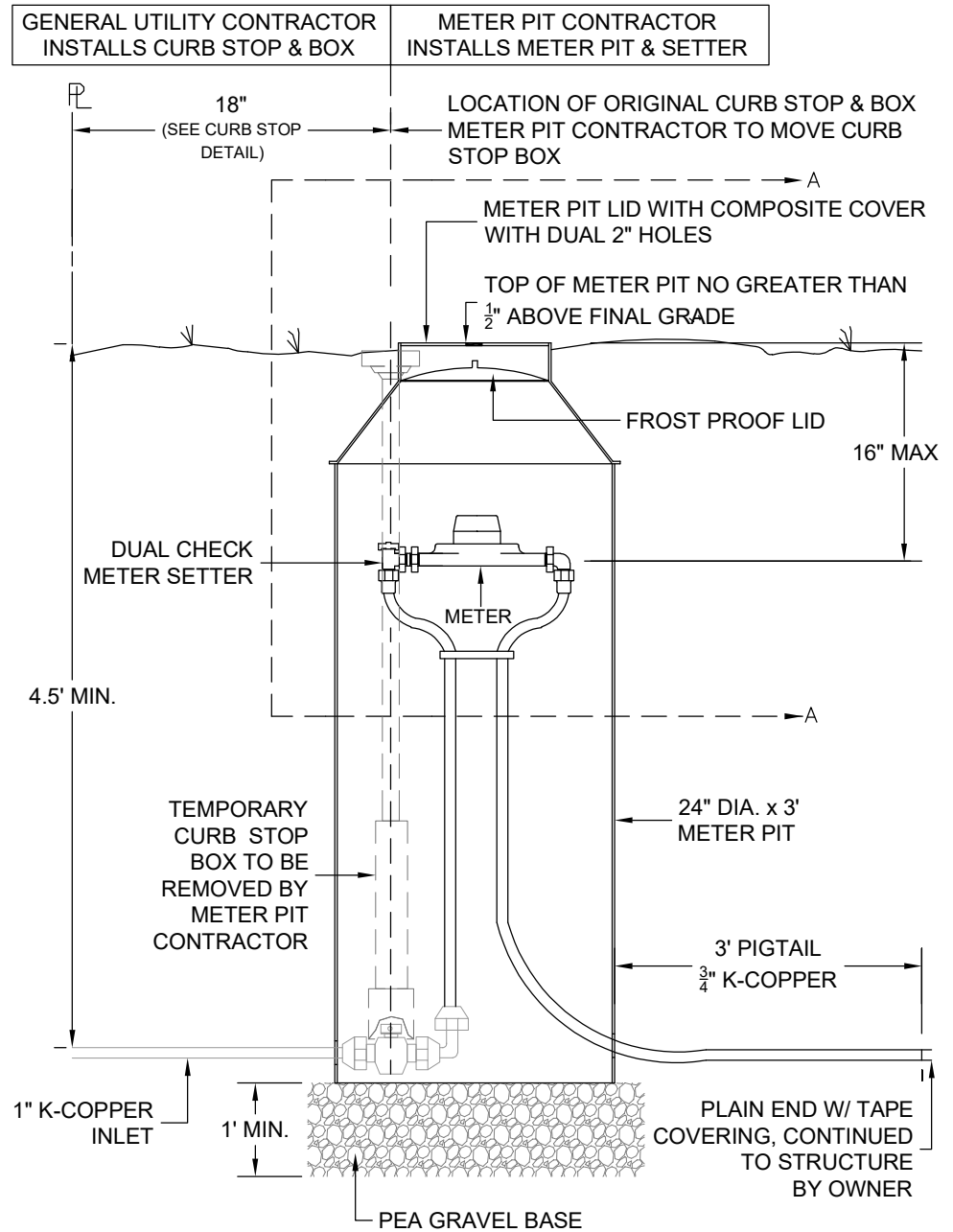
TYPICAL $\frac{3}{4}$ " & 1" METER PIT DETAIL

Designed	N/A	Date N/A	File No. esd010_service_typical
Drawn	RKB	10/91	Drawing No. 010
Revised	EJV	2/24	NOT TO SCALE
Approved	RS	2/24	Sheet 01 of 02

SECTION A-A



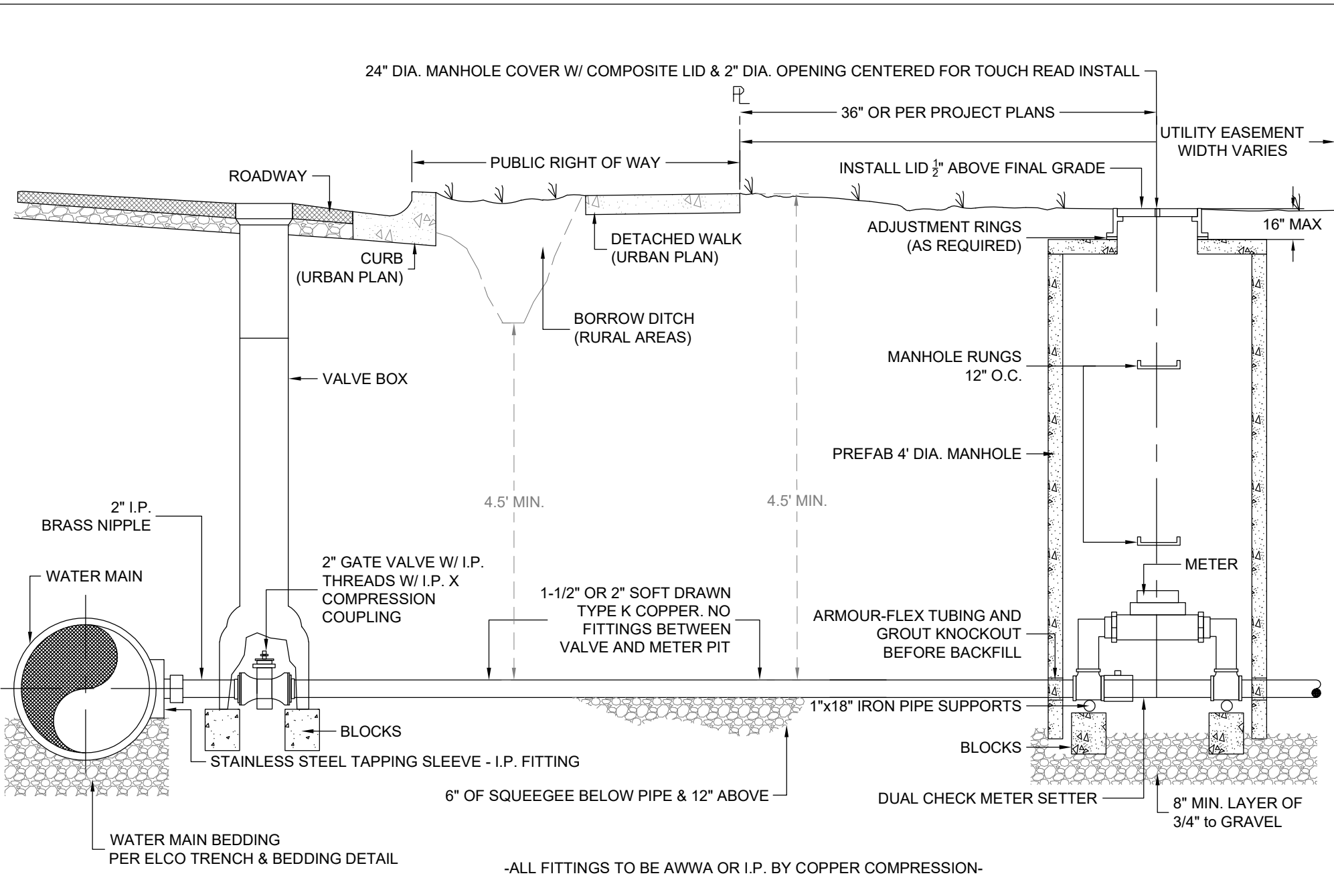
ITEM	NAME
A	ANGLE DUAL CHECK VALVE
B	ANGLE BELL VALVE
C	"U" BRANCH YOKE
D	METER IDLER SUPPORTS
E	METER PIT



EAST LARIMER COUNTY WATER DISTRICT

TYPICAL 3/4" DUAL METER PIT DETAIL

Designed	N/A	Date	N/A	File No.	esd011_service_dual
Drawn	EJV		8/20	Drawing No.	011
Revised	RS		7/24		NOT TO SCALE
Approved	RS		7/24		Sheet 02 of 03

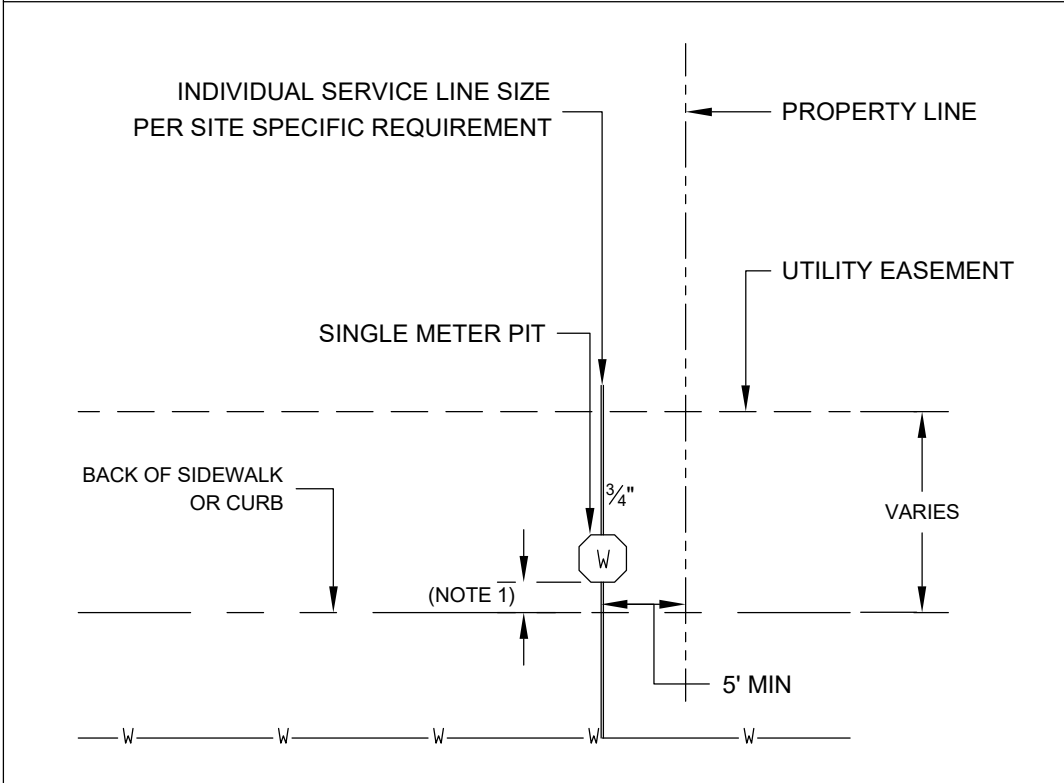


EAST LARIMER COUNTY WATER DISTRICT

LARGE WATER SERVICE DETAIL 1-1/2"-2"

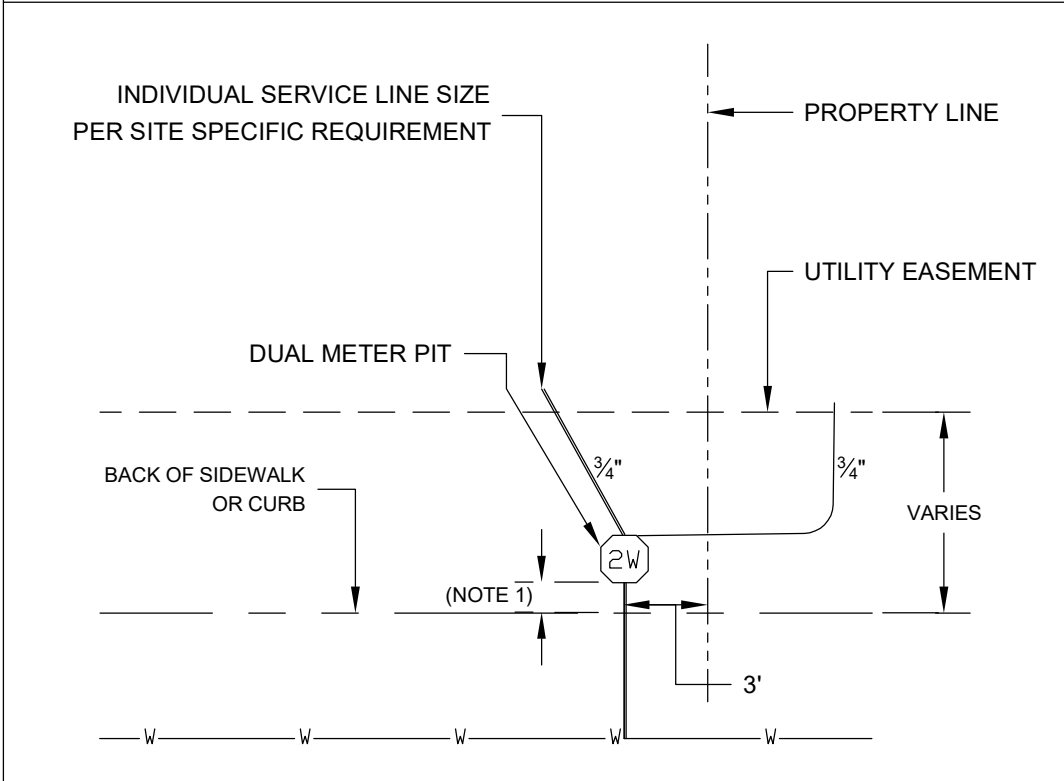
Designed	N/A	Date N/A	File No. esd012_service_large
Drawn	REM	09/91	Drawing No. 012
Revised	EJV	2/24	NOT TO SCALE
Approved	RS	2/24	Sheet 03 of 03

SINGLE METER LAYOUT



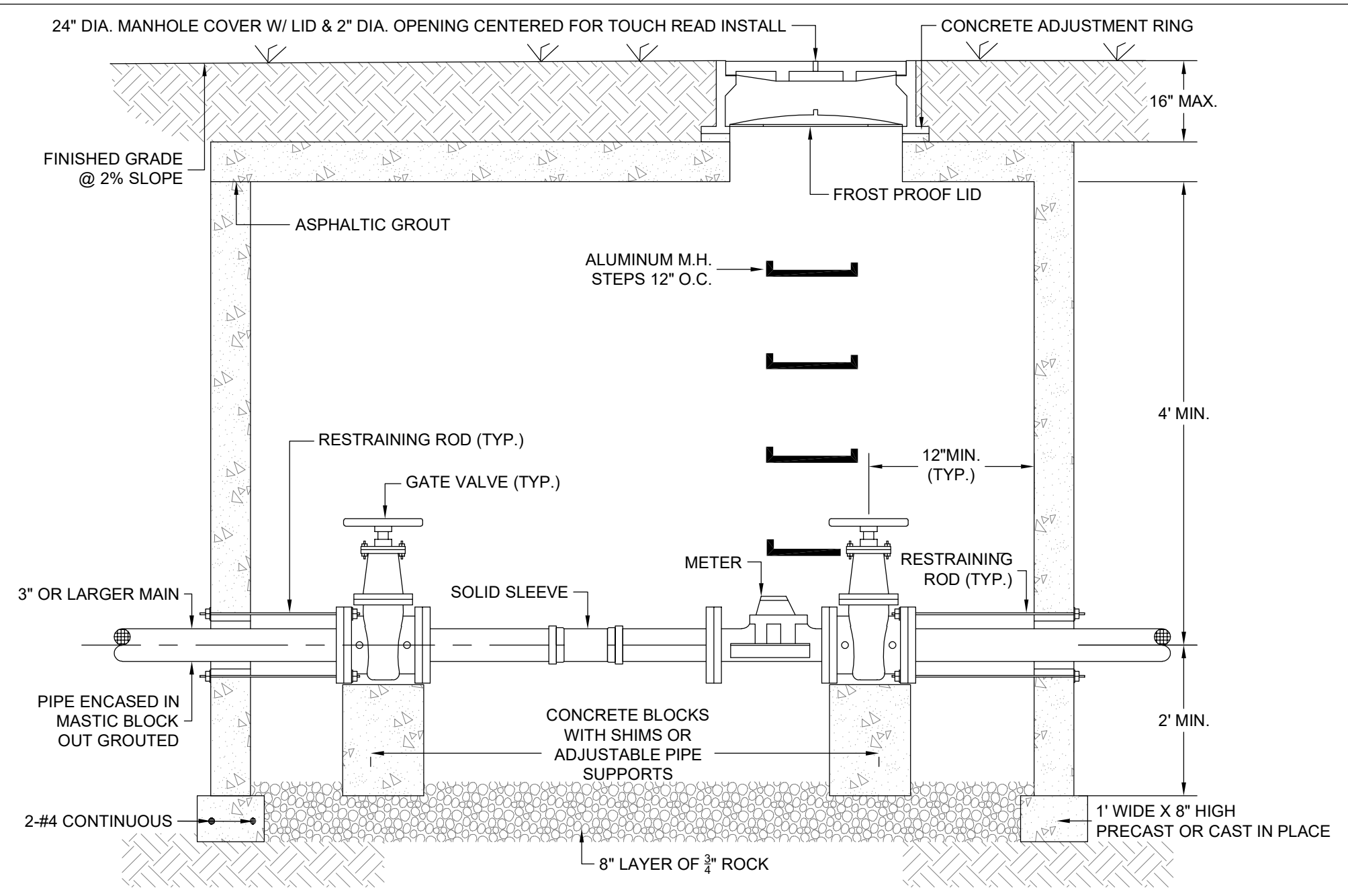
- NOTES:**
- 1: See Meter Pit Detail
 - 2: Distance may need to be modified if drainage or other site specific conditions dictate changes to these dimensions.

DUAL METER LAYOUT



EAST LARIMER COUNTY WATER DISTRICT WATER METER LAYOUT DETAILS

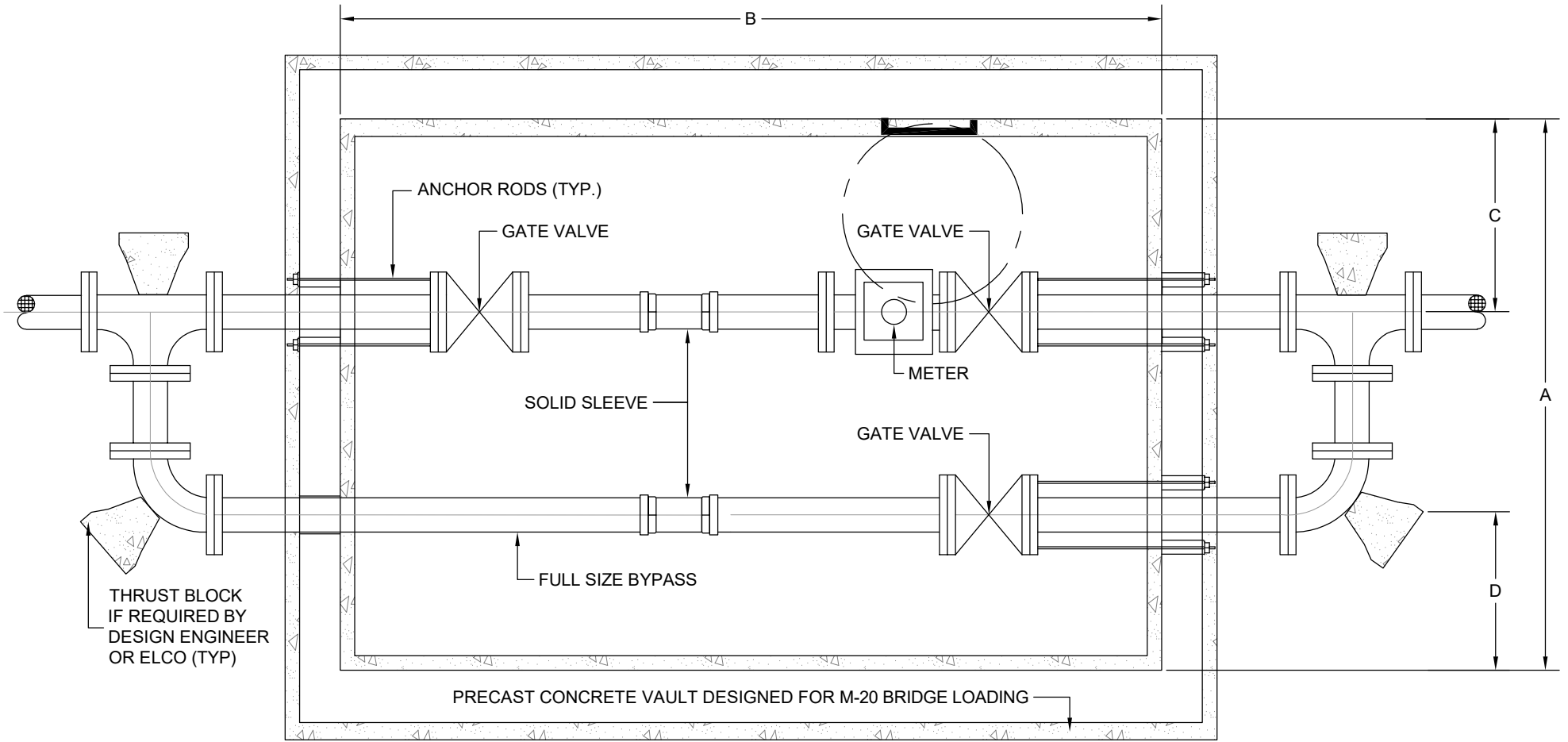
Designed	RS	Date 07/29/20	File No. esd013_meterpit_layout
Drawn	EJV	07/29/20	Drawing No. 013
Revised	EJV	2/24	NOT TO SCALE
Approved	RS	2/24	Sheet 01 of 01



EAST LARIMER COUNTY WATER DISTRICT

3", 4" & 6" METER VAULT (SIDE VIEW)

Designed	N/A	Date N/A	File No. esd014_meter_vault_profile
Drawn	REM	10/99	Drawing No. 014
Revised	EJV	2/24	NOT TO SCALE
Approved	RS	2/24	Sheet 01 of 02



METER VAULT DIMENSIONS

METER SIZE	A	B	C	D
3 inch	6'	7'	2'-6" MIN.	2'-6" MIN.
4 inch	7'	7'	3' MIN.	2'-6" MIN.
6 inch	8'	7'	3' MIN.	2'-6" MIN.

GENERAL NOTES:

IF PRESSURE REDUCING VALVE IS REQUIRED IT SHALL BE INSTALLED INSIDE BUILDING, IMMEDIATELY FOLLOWING THE MAIN SHUT-OFF VALVE.

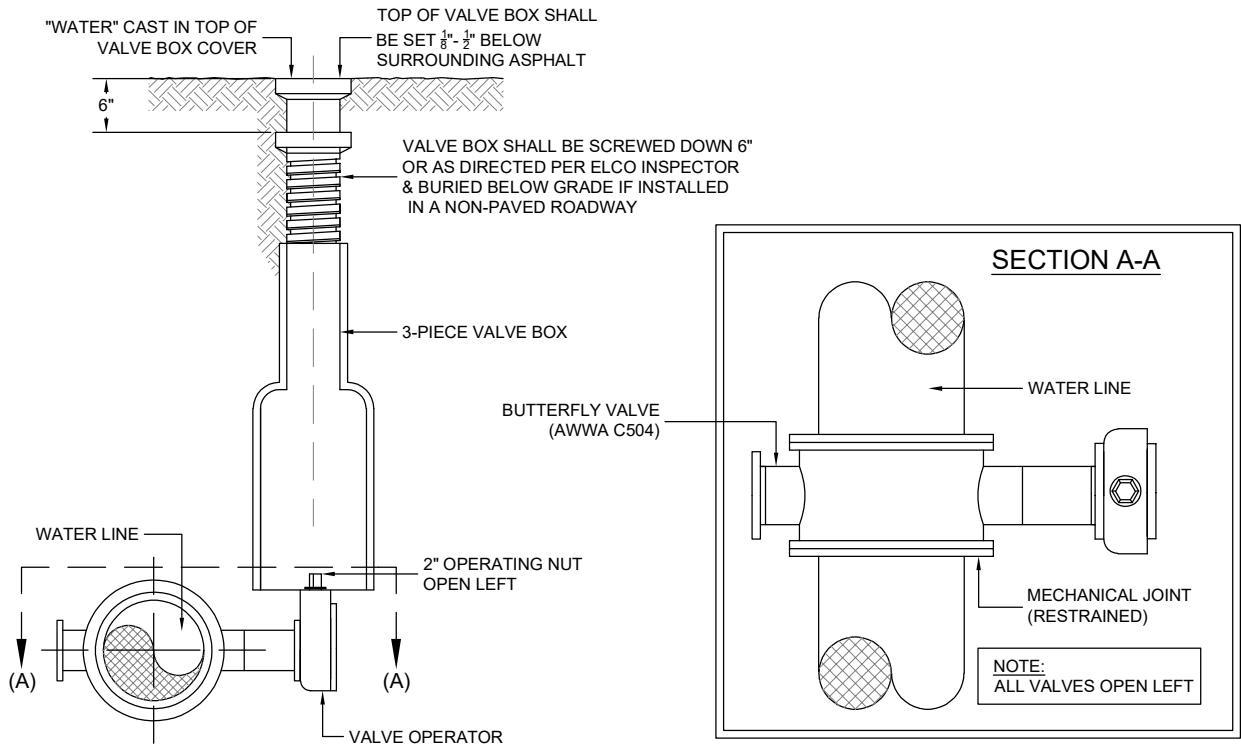


EAST LARIMER COUNTY WATER DISTRICT

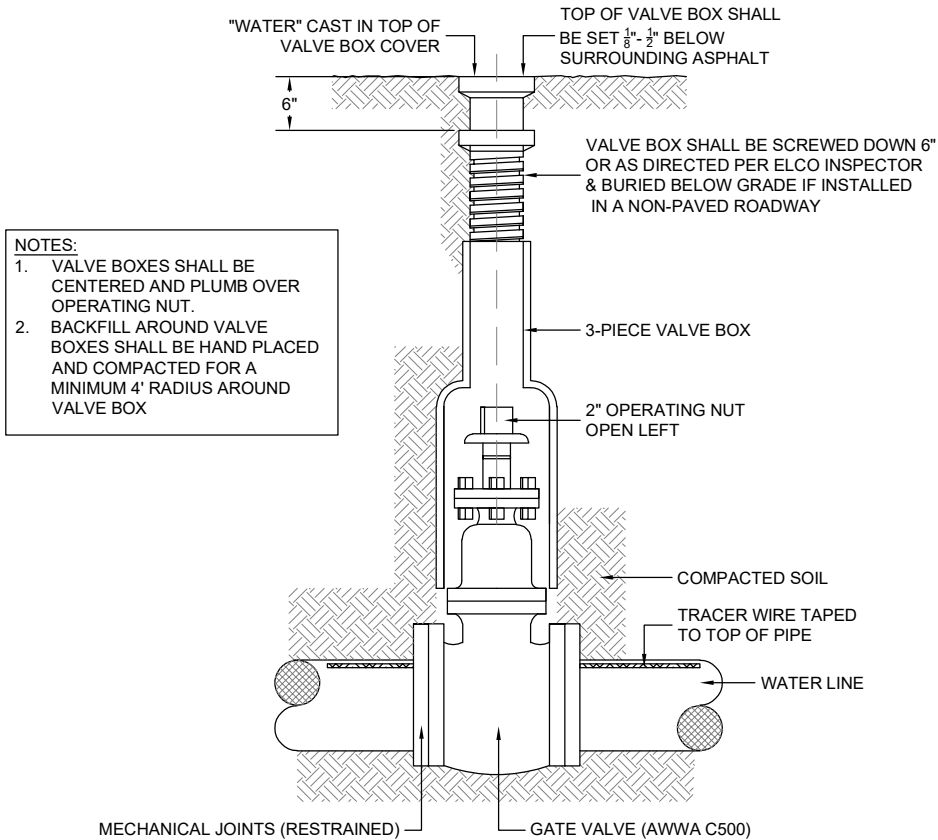
3",4" & 6" METER VAULT (TOP VIEW)

Designed	N/A	Date N/A	File No. esd015_meter_vault_plan
Drawn	REM	10/99	Drawing No.
Revised	EJV	2/24	015
Approved	RS	2/24	NOT TO SCALE
			Sheet 02 of 02

BUTTERFLY VALVE DETAIL



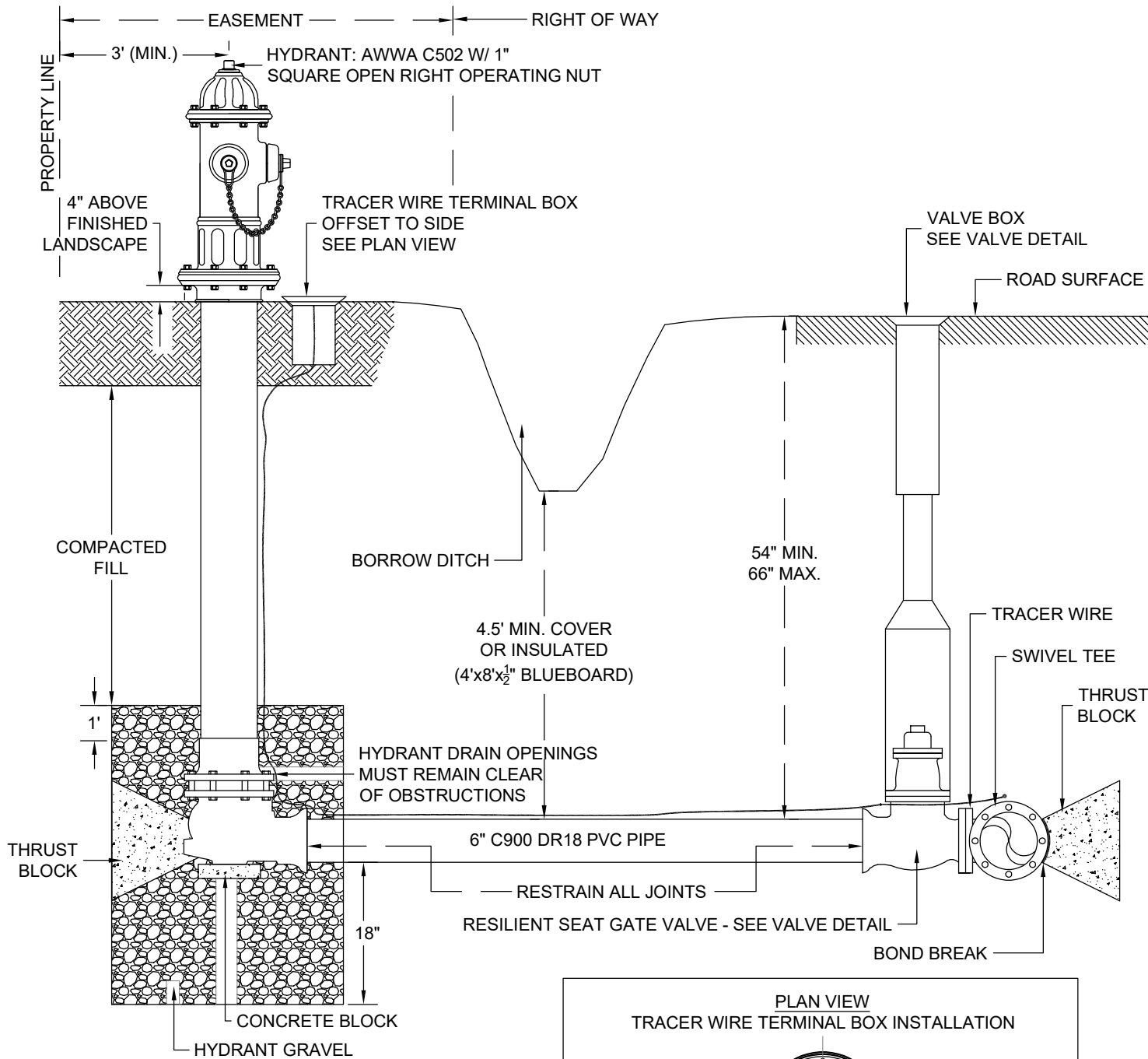
GATE VALVE DETAIL



EAST LARIMER COUNTY WATER DISTRICT

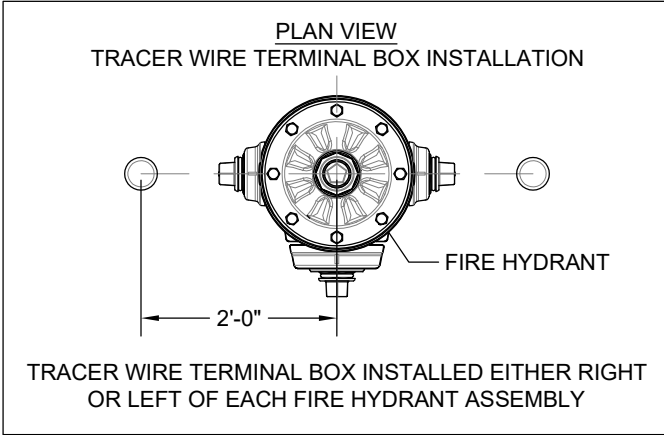
VALVE DETAIL

Designed	<i>RKB</i>	Date	08/91	File No.	esd016_valve_detail
Drawn	<i>EJV</i>	Date	08/20	Drawing No.	016
Revised	<i>EJV</i>	Date	5/23		NOT TO SCALE
Approved	<i>RS</i>	Date	8/21		Sheet 01 of 01



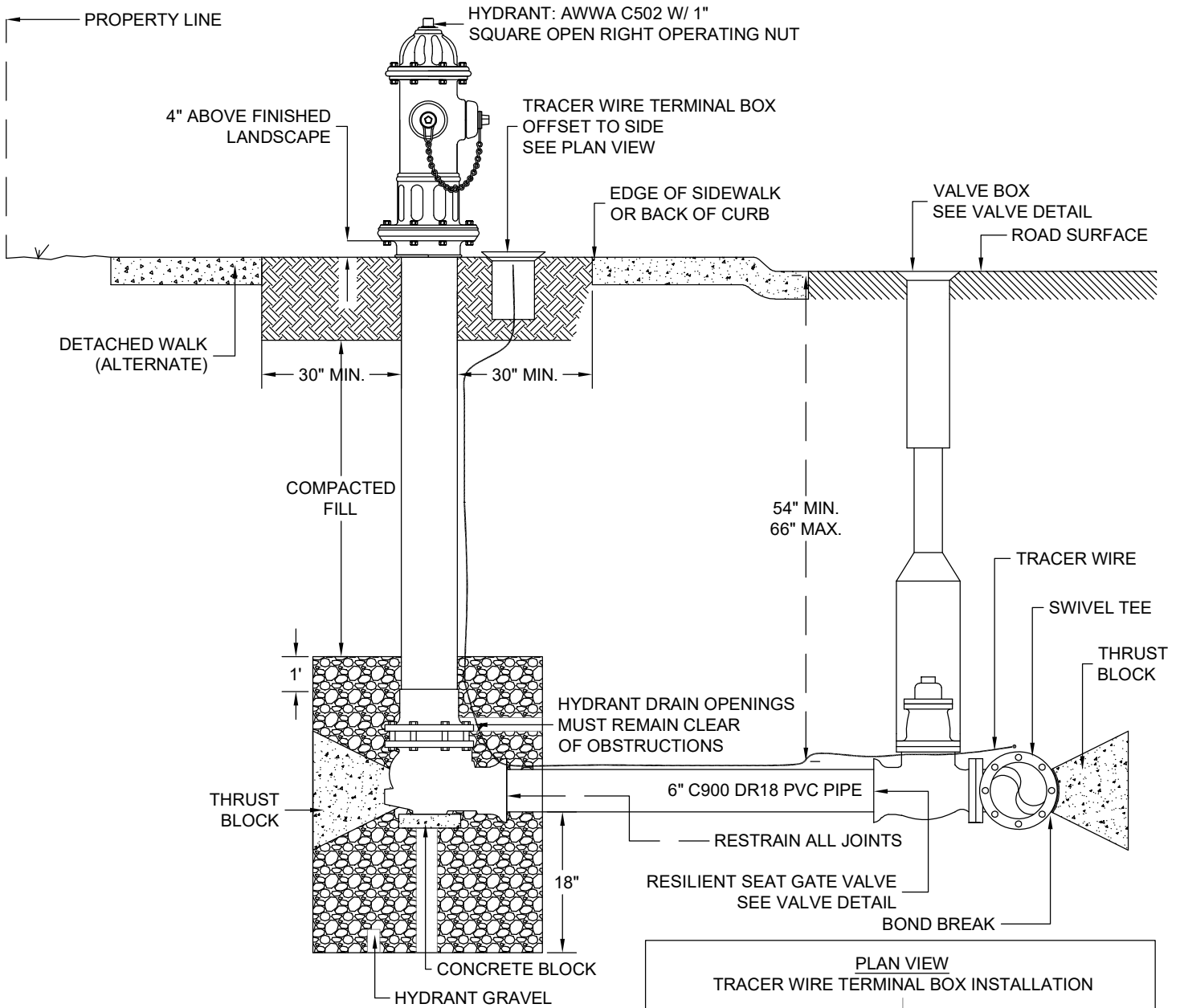
NOTES:

1. NO LANDSCAPING (TREES, SHRUBS, BOULDERS, ETC.), RETAINING WALLS OR FENCES ALLOWED WITHIN 10' OF FIRE HYDRANT.
2. FIRE HYDRANT PIPING, VALES, ETC. SHALL BE DOUBLE WRAPPED IN POLYETHYLENE.

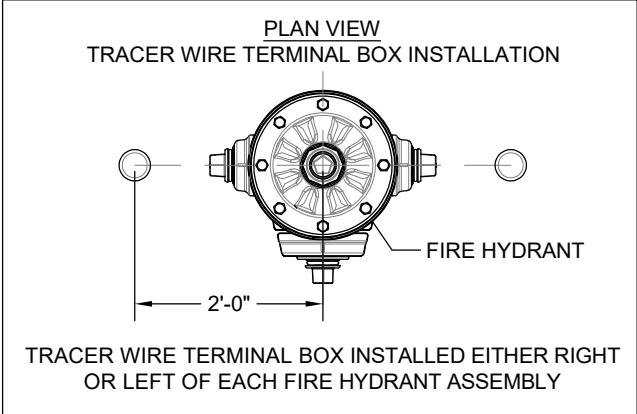


EAST LARIMER COUNTY WATER DISTRICT
TYPICAL FIRE HYDRANT INSTALLATION

Designed	N/A	Date	N/A	File No.	esd017_fire_hydrant
Drawn	EJV	8/20		Drawing No.	017
Revised	EJV	2/24			NOT TO SCALE
Approved	RS	2/24			Sheet 01 of 02

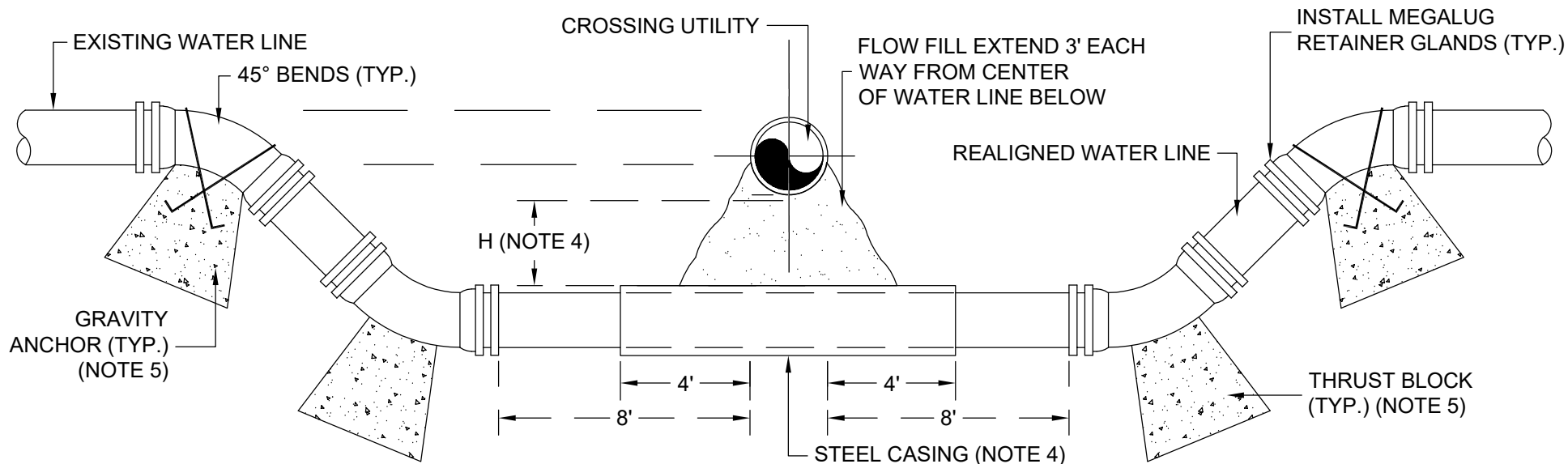


- NOTES:**
1. NO LANDSCAPING (TREES, SHRUBS, BOULDERS, ETC.), RETAINING WALLS OR FENCES ALLOWED WITHIN 10' OF FIRE HYDRANT.
 2. FIRE HYDRANT PIPING, VALES, ETC. SHALL BE DOUBLE WRAPPED IN POLYETHYLENE.



EAST LARIMER COUNTY WATER DISTRICT
 TYPICAL FIRE HYDRANT INSTALLATION
 HIGH DENSITY DEVELOPMENT AREAS

Designed	N/A	Date	N/A	File No.	esd018_fire_hydrant_hd
Drawn	EJV		8/20	Drawing No.	018
Revised	EJV		2/24		NOT TO SCALE
Approved	RS		2/24		Sheet 02 of 02



GENERAL NOTES:

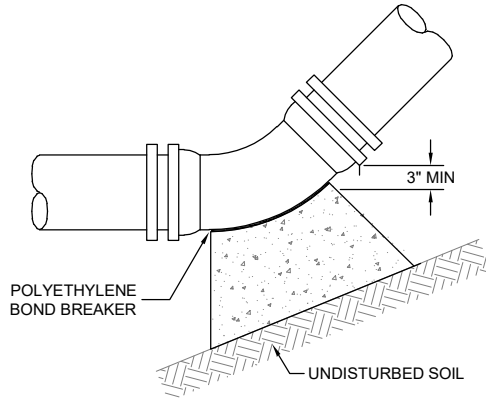
1. SEE THRUST BLOCK DETAIL FOR SIZING.
2. ALL FITTINGS & JOINTS IN LOWERING AREA TO BE RESTRAINED WITH MECHANICAL JOINT RESTRAINTS.
3. ALL D.I.P PIPE & FITTINGS SHALL BE DOUBLE WRAPPED WITH POLYETHYLENE ENCASEMENT.
4. IF CLEARANCE "H" IS LESS THAN 18", INSTALL STEEL CASING WHEN CROSSING UTILITY IS 24" DIAMETER OR GREATER, OR AS REQUIRED BY ELCO BASED ON SITE SPECIFIC CONDITIONS. FOR CROSSING UTILITY OF DIAMETER LESS THAN 24", CASING IS NOT REQUIRED UNLESS SPECIFIED BY ELCO PER SITE SPECIFIC CONDITIONS.
5. ANCHOR AND THRUST BLOCKS TO BE INSTALLED ONLY IF ADEQUATE MECHANICAL THRUST RESTRAINT CANNOT BE PROVIDED OR AS REQUIRED BY DESIGN ENGINEER OR ELCO. ENGINEER TO DETERMINE DISTANCES TO BE RESTRAINED.



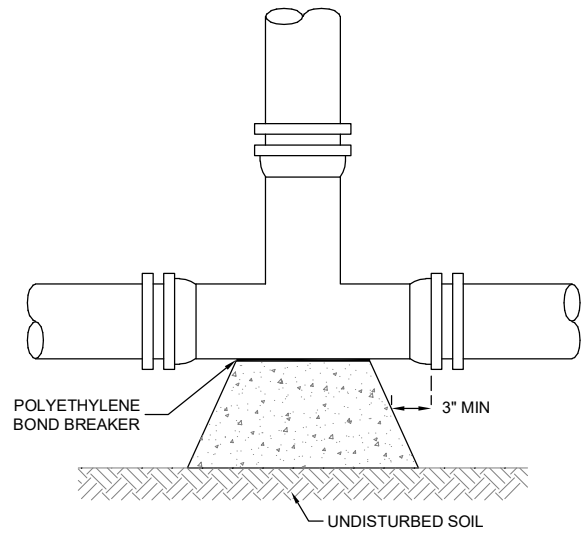
EAST LARIMER COUNTY WATER DISTRICT

WATER MAIN LOWERING DETAIL

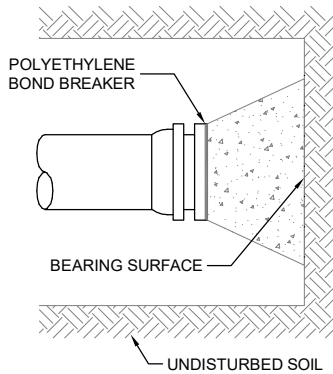
Designed	N/A	Date N/A	File No. esd019_main_lowering
Drawn	EJV	8/20	Drawing No.
Revised	EJV	8/21	019
Approved	RS	8/21	NOT TO SCALE
			Sheet 01 of 01



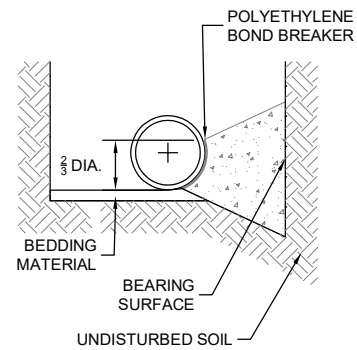
TYPICAL BEND



TEE



PLUG



TYPICAL CROSS-SECTION

BEARING AREAS FOR VARIOUS FITTINGS (FT²)

SIZE	TEE & PLUG	90° BEND	45° BEND	22 1/2° BEND	11 1/4° BEND
6"	4.0	5.5	3.0	1.5	1.0
8"	6.5	9.0	5.0	2.5	1.5
12"	14.0	20.0	11.0	5.5	3.0
16"	25.0	35.0	19.0	10.0	5.0
20"	38.0	54.5	29.5	15.0	7.5
24"	55.5	78.5	42.5	22.0	11.0
30"	86.5	122.0	66.0	34.0	17.0
36"	124.0	175.5	95.0	48.5	24.5
42"	168.0	237.5	128.5	65.5	33.0

NOTES:

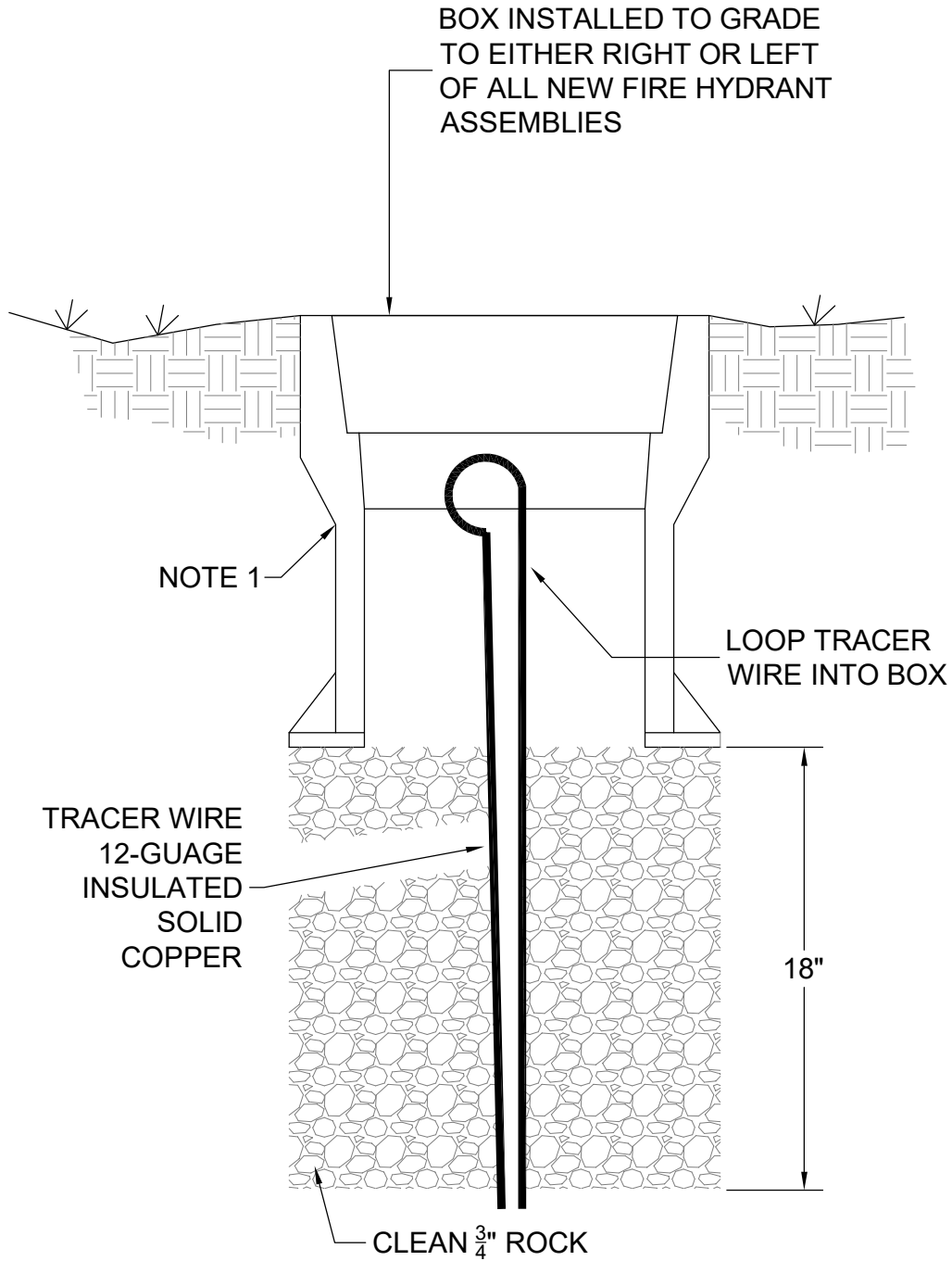
1. ALL CONCRETE SHALL BE POURED AGAINST UNDISTURBED EARTH
2. ALL FITTINGS & PLUGS MUST BE WRAPPED WITH POLYETHYLENE TO PREVENT CONCRETE FROM ADHERING TO THE BOLTS OR PIPE.



EAST LARIMER COUNTY WATER DISTRICT
TYPICAL THRUST BLOCK

Designed	N/A	Date	N/A	File No.	esd020_typical_thrust
Drawn	EJV		8/20	Drawing No.	020
Revised	EJV		8/20		NOT TO SCALE
Approved	RS		8/20		Sheet 01 of 01

INSTALLATION DETAIL



NOTES:

1. BOX & LID ASSEMBLY SHALL BE CAST IRON TYLER SLIP-TYPE MODEL 6865 (TOP ONLY) OR APPROVED EQUAL.
2. TRACER WIRE SHALL NOT BE INSTALLED (BROUGHT TO SURFACE) IN VALVE BOXES.



EAST LARIMER COUNTY WATER DISTRICT
TRACER WIRE BOX DETAIL

Designed	<i>N/A</i>	Date	<i>N/A</i>	File No.	<i>esd022_tracer_wire_box</i>
Drawn	<i>EJV</i>	Date	<i>8/20</i>	Drawing No.	<i>021</i>
Revised	<i>EJV</i>	Date	<i>10/21</i>	NOT TO SCALE	
Approved	<i>RS</i>	Date	<i>8/21</i>	Sheet <i>01</i> of <i>01</i>	